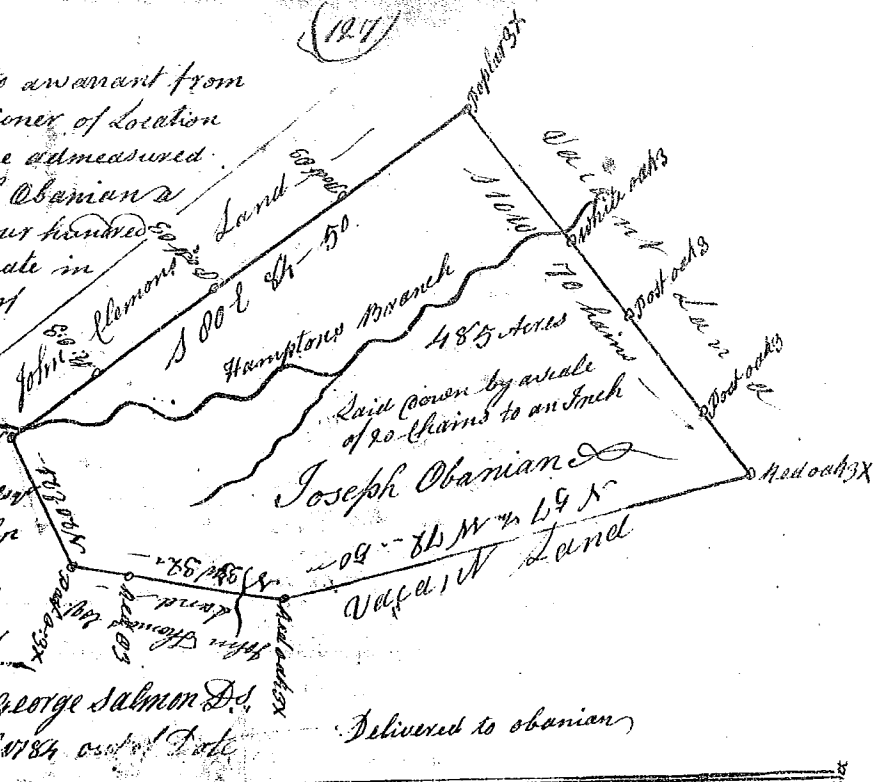


State of South Carolina

(124)

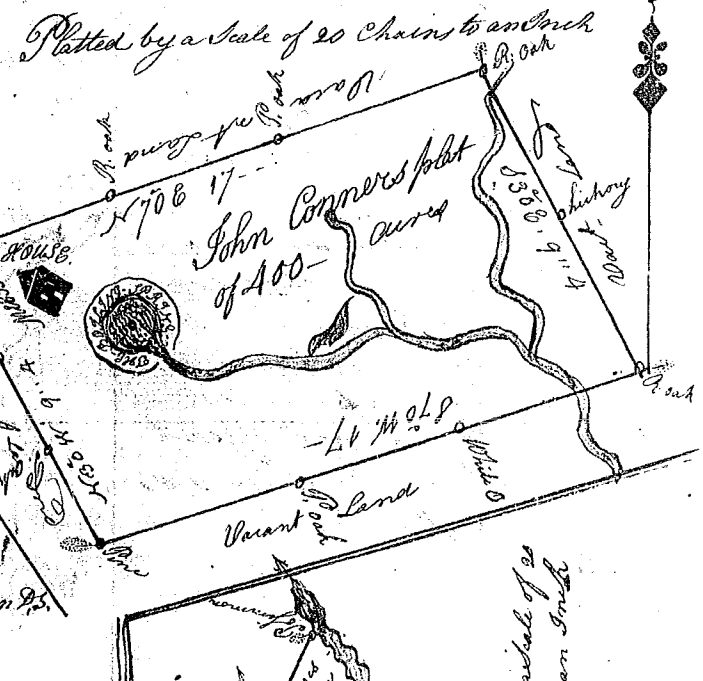
Pursuant to a warrant from John Thomas Esq. Commissioner of Location dated the 21 May 1784 I have admeasured and laid out unto Joseph Obamian a tract of Land containing four hundred and eighty five acres situate in ninety six district west of the Old Indian Boundary on both sides of Hampton Branch of Sugar River bounding W on land laid out for John Thomas Esq. S on land laid out to John Clemons all other sides on Vacant Land and hath such form and Marks as the above annexed plat represents

Surveyed the 13th July 1784 George Salmon D.
Recorded the 8th day Sept: 1784 out of Date



State of South Carolina 96 District
Pursuant to a warrant to me directed by John Thomas Esq. Commissioner of Locations for the district of the North side of Saluda River I have Surveyed and laid out unto John Conner a Tract of Land containing 400 acres Situate lying and being Below the ancient Boundary line on Shoals Creek a branch of Sawson's fork of Peeble River including John Armstrongs Improvement and Boiling spring Meeting House Vacant Land on every side and has such shape and marks as the Annexed plat Represents

Surveyed by me the 16th July 1784 James Seaborn D.
Recorded the 9th day of Sept: 1784



State of South Carolina 96 District
Pursuant to a warrant to me Directed by John Thomas Esq. Commissioner of Locations for the District of the North side of Saluda River I have Surveyed and laid out unto Francis Ballinger a Tract of Land containing 300 acres Situate lying and being Below the ancient Boundary line on Peeble River including Adcock's Dicksons and Lathys Plantations bounding N by the said river all other sides Vacant and hath such shape and marks as Annexed plat Represents

Surveyed by Me the 4th day of August 1784
Recorded the 9th day of Sept: 1784 James Seaborn D.
Delivered to Edward Ballinger

